

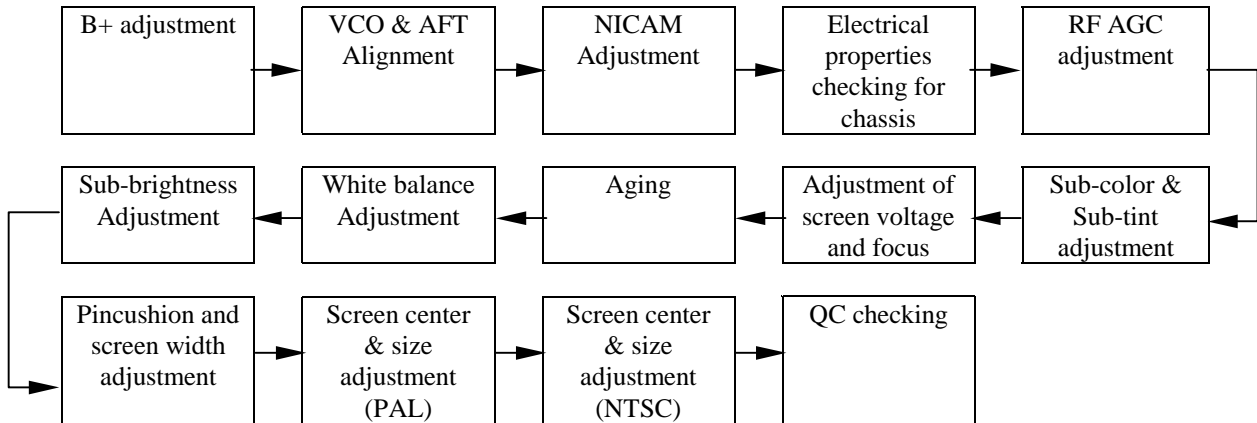
TEAC®

SERVICE MANUAL

CTM3440

34CM CTV

Flowchart chart of alignment procedure for M17 chassis:



ALIGNMENT PROCEDURE FOR M17 CHASSIS:

D-mode:

Enter D-Mode by pressing D-Mode ON/OFF key, and then you can enter the D-mode.

S-mode:

Enter S-Mode by pressing VOLUME DOWN key on the unit until the volume decrease to minimum level, then press the DISPLAY key on the remote handset (don't release the volume key) and you can enter S- mode.

After enter D-mode or S-mode, you can adjust the setting according to the following procedure,

Press "1" to enter the white balance alignment menu,

Item	Description
RCUT	Red cutoff
BCUT	Blue cutoff
GCUT	Green cutoff
BDRV	Blue drive
GDRV	Green drive

Press "2" to enter picture geometry alignment menu for PAL system,

Item	Description
VPOS50	PAL V. position
HIGH50	PAL V. size
VLIN50	PAL V. linearity
VSC50	PAL V-S correction
OSDV50	PAL V. position of OSD
HPOS50	PAL H. position

Press "3" to enter picture geometry alignment menu for NTSC system,

Item	Description
VPOS60	NTSC V. position
HIGH60	NTSC vertical size
VLIN60	NTSC V. linearity
VSC60	NTSC V-S correction
OSDV60	NTSC V. position of OSD
HPOS60	NTSC H. position

Press "4" to enter sharpness setting menu,

Item	Description	Default data
SHPTV3	50% sharpness in 3.58 system (TV)	20
SHPAV3	50% sharpness in 3.58 system (AV)	1A
SHPTV4	50% sharpness in 4.43 system (TV)	1D
SHPAV4	50% sharpness in 4.43 system (AV)	1A
SHPX	Maximum sharpness	3F
SHPN	Minimum sharpness	10

Press "5" to enter sound alignment menu,

Item	Description	Default data
NIML	NICAM sound output level	07
VOL1	Output level of left channel (FM)	07
VOL2	Output level of right channel (FM)	07
DRIFT	Sync. Pulse error allowance	03
HCOUNT	Sync. pulse counting	06

Press "6" to enter AGC and volume setting,

Item	Description	Default data
RFAGC	AGC setting	22
HAFC	HAFC setting.	00
S-R-Y	Sub color for system	09
S-B-Y	Sub color for system	06
VOL01	Volume output level at 1%	00
VOL25	Volume output level at 25%	18
VOL50	Volume output level at 50%	31

Press "7" to enter system setting,

Item	Description	Default data
VCDM0	System setting	68
VCDM1	System setting	00
VCDM2	System setting	40
MOD0	System setting	00
MOD1	System setting	32
MOD2	System setting	F0
OPTION	System setting	04

Press "8" to enter picture alignment menu 1,

Item	Description	Default data
SCNT	Sub contrast for luminance signal	0A
CNTX	Maximum contrast	3F
CNTN	Minimum contrast	08
BRTX	Maximum brightness	38
BRTN	Minimum brightness	18
COLX	Maximum color	7F
COLN	Minimum color	00

Press "9" to enter picture alignment menu 2,

Item	Description	Default data
CNTC	50% contrast	26
BRTC	50% brightness	38
COLC	50% color	40
TNTC	50% tint	40
COLP	Color level for PAL	00
COLS	Color level for SECAM	40
BRTS	Sub brightness for SECAM	00

Press "0" to enter OSD setting menu,

Item	Description	Default data
OSD	Horizontal position of OSD	0E
TXCX	OSD intensity when maximum contrast	30
RGCN	OSD intensity when minimum contrast	0D
TNTX	Maximum tint level	7F
TNTN	Minimum tint level	7F

I) Adjustment of B+ voltage

1. Apply 110-240VAC($\pm 5V$) to mains power input, and Philips standard testing pattern to RF input.
2. Adjust VR801 in STANDARD mode until voltage at TP2 (B+) is $112V \pm 0.5V$.

II) Adjustment of VCO and AFT

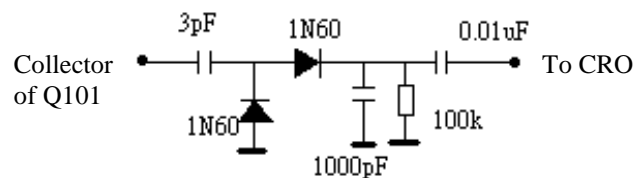
1. Apply a 38.9MHz signal to the IF input.
2. Monitor the DC voltage at pin 48 of IC201.
3. Adjust T201 until the voltage at pin 48 of IC201 becomes $4.62 \pm 0.2V$ (the picture must stable).
4. Enter D-mode and press the AFT (update/BBE) button. It will start Auto AFT Adjustment and the screen will show "PIFAFT OK" if the process is finished.

III) NICAM Adjustment (for NICAM model only)

1. Apply a 38.9MHz color bar with NICAM signal to the IF input.
2. Monitor the DC voltage at pin 15 of IC1101.
3. Adjust T1101 until the voltage at pin 15 of IC1101 becomes $2.5 \pm 0.1V$.
4. Then check the waveform at pin 4 and 6 of P1103 and it must show correct audio signal.

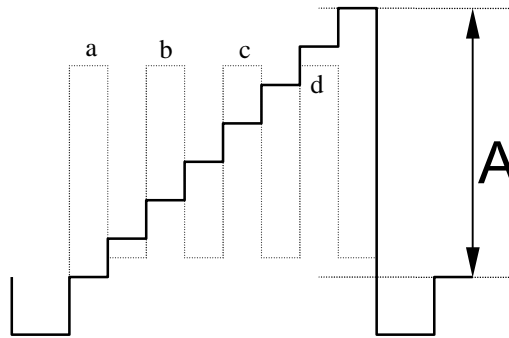
IV) The alignment of RFAGC

1. Connect the detector shown below to collector of Q101.
2. Receive a grey scale signal with $70dB \mu V$ amplitude.
3. Adjust RFAGC item until the output of the detector becomes $0.8V_{pp}$



V) Adjustment of Sub-contrast, Sub-tint and Sub-colour for NSTC and PAL signal.

1. Enter D-mode, and connect the probe of Oscilloscope to the conjunction between R217 and P201 (B-out).
2. Apply the Grey-scale/Colour-bar (NTSC signal) to the AV input, in STANDARD status.
3. Select CNTC to adjust the sub-contrast, until that the amplitude "A" is 2.5V_{p-p} as shown below.
4. Select COLC to adjust the sub-colour by tuning the amplitude of "a" and "d" to the same.
5. Select TNTC to adjust the sub-tint by tuning the amplitude of "b" and "c" to the same.
6. Apply the Grey-scale/Colour-bar (PAL signal) to the AV input, in STANDARD status.
7. Select COLP to adjust the sub-colour by tuning the amplitude of "a", "b", "c" and "d" to the same.

**VI) Adjustment of Focus, Screen Voltage and Sub-brightness**

1. Receive a crosshatch pattern.
2. Adjust the "FOCUS" VR on the flyback the make the picture clear.
3. Enter D-mode and press "1--" key and the screen will become a horizontal line. Then adjust the "SCREEN" VR on the flyback transformer to set the intensity of the line to a minimum visible level (the line can just be seen).
4. Press "1--" key again and the TV will become full raster.
5. Select BRTC to adjust the sub-brightness, until that the 2nd dark bar of 8 level grey scales just can be seen.

VII) Adjustment of White balance

1. Receive a black and white pattern at STANDARD status.
2. Use a color analyzer to measure the black side of the screen. By changing the value of BCUT and GCUT, set the reading of the color analyzer to x=284, y=299.
3. Then measure the white side of the screen. By changing the value of BDRV and GDRV, set the reading of the color analyzer to x=284, y=299.
4. Repeat step 2&3 until you can get the correct reading for both black and white sides.

VIII) Adjustment of Pincushion and Picture Width (for pure flat model only)

1. Receive a crosshatch pattern.
2. Adjust VR302 until the vertical line become straight.
3. Adjust VR303 for horizontal size.

IX) Adjustment of Picture Geometry (PAL)

1. Apply the crosshatch pattern (PAL signal) to the RF input, in STANDARD status.
2. Select HPOS50 to adjust the Horizontal center.
3. Select VPOS50 to adjust the Vertical center.
4. Select HIGH50 to adjust the Vertical amplitude.
5. Select VLIN50 to adjust the vertical linearity.
6. Select VSC50 to adjust the vertical S-correction.

X) Adjustment of Picture Geometry (NTSC)

1. Apply the crosshatch pattern (NTSC signal) to the RF input, in STANDARD status.
2. Select HPOS60 to adjust the Horizontal center.
3. Select VPOS60 to adjust the Vertical center.
4. Select HIGH60 to adjust the Vertical amplitude.
5. Select VLIN60 to adjust the vertical linearity.
6. Select VSC60 to adjust the vertical S-correction.

XI) Adjustment of OSD position

1. Enter D-mode and press key "0", then choose OSD item and adjust the OSD horizontal position.
2. Enter D-mode and press key "2", then choose the OSDV50 item and adjust the OSD horizontal position.
3. Enter D-mode and press key "3", then choose the OSDV60 item and adjust the OSD horizontal position.

System setting of M17

VCDM0 (default value: 68)

BIT	Item
0	System switch: 0 : normal identify mode 1 : weak signal identify mode
1	White peak suppress: 0: on 1: off
2,3	ABL gain 00: -0.74v 01: -0.64v 10: -0.37v 11: -0.12v
4,5	ABL start point 00: -0.01v 01: -0.11v 10: -0.3v 11: -0.45v
6	CW-SW: TB1238N, pin 29 Fsc CW output 0 : AUTO, 1 : 4.43M
7	In force system mode, the status of color killer when weak signal 0: on 1: off

VCDM1 (default value: 00)

BIT	Item
0	Blanking: 0: on 1: off
1,2,3,4,5	V-Mute timing: = 200ms + 8ms xData
6	Base band filter in NTSC system: 0: on, 1: off
7	VMOD

VCDM2 (default value: 40 for 38MHz IF, 30 for 38.9MHz IF)

BIT	Item
0	AFT-mute: 0: on 1: off
1	SECAM-ADJ: 0: SECAM correction off 1: SECAM correction on
2	TB1238N_VMOD
3	PIF VCO ADJ 0: follow bit 0 1: manual adjust
6,5,4	IF frequency: 111: 33.9MHz 110: 33.95MHz 101: 34.47MHz 100: 38MHz 011: 38.9MHz 010: 39.5MHz 001: 45.75MHz 000: 58.75MHz
7	No use

MODE0

BIT	Item
0	0: normal AV 1: SCART
1	0: English 1: English + Chinese
2	Low Noise Amp. at tuner: 0: off 1: on
3	No use
4, 5, 6, 7	Muting time when power on: 8ms x16 xdata (max. 1920ms)

MODE1

BIT	Item
0	Logo: 0: disable 1: TCL Logo
1	No. of channel: 0: 49 1: 99
2	No use
3	Menu background 0: disable 1: black background
4	No. of AV 0: 1 1: 2
5	SECAM 0: off 1: on
6	D-mode 0: enable 1: disable
7	No use

MODE2

BIT	Item
0	Teletext 0: off 1: on
1	NICAM & IGR 0: off 1: on
2	No use
3	No use
4	BG: 0: off 1: on
5	I: 0: off 1: on
6	DK: 0: off 1: on
7	M: 0: off 1: on

OPTION (default value: 04)

BIT	Item
0	When blue background off (mute pin of CPU): 0: audio mute on 1: audio mute off
1	When blue background off (external mute pin of CPU): 0: audio mute on 1: audio mute off
2	When change channel: 0: picture mute off 1: picture mute on
3	Audio demodulation gain setting: 0: 50KHz 1: 25KHz
4	When no signal: 0: search channel by changing VT 1: use memorized VT
5	Power on mode: 0: previous 1: force standby
6	No use
7	No use

PART CODE	DESC	QTY	LOCATION
08-01436U-CRY	ASS'Y - CRT BD		
10-1N4148-ABX	DIODE 1N4148 (SWITCHING)	2	D501, D502
11-0BF422-0BX	TRANSISTOR BF422	3	Q501, Q503, Q505
11-A562TM-0BX	TRANSISTOR 2SA562TM-0	1	Q507
11-SC1815-YBX	TRANSISTOR 2SC1815Y	3	Q502, Q504, Q506
18-CB0102-JNX	RES. C.F. 1K OHM 1/6W +/-5%	1	R515
18-CB0272-JNX	RES. C.F. 2.7K OHM 1/6W +/-5%	1	R514
18-CB0561-JNX	RES. C.F. 560 OHM 1/6W +/-5%	6	R501, R503, R505, R508, R510, R513
18-CB0681-JNX	RES. C.F. 680 OHM 1/6W +/-5%	5	R502, R506, R509, R511, R522
18-FE0272-JNX	RES. M.O. 2.7K OHM 1/2W +/-5%	3	R519, R520, R521
18-FG0123-JHX	RES. M.O. 12K OHM 2W +/-5%	3	R516, R517, R518
25-BCB471-M1X	CAP. ELEC 470 UF 16V +/-20%	1	C506
25-BLA100-M1X	CAP. ELEC 10 UF 250V +/-20%	1	C504
26-AMK102-KRX	CAP. CER 1000 PF 2KV +/-10% R	1	C505
26-EBP102-KBX	CAP. CER 1000 PF 50V +/-10% B	2	C508, C509
26-EBP471-JCX	CAP. CER 470 PF 50V +/-5% CH	3	C501, C502, C503
34-R100K2-1CX	COIL CHOKE 10 UH +/-10%	1	L502
35-139730-00X	FERR. BEAD BF60	2	FOR C508 (L505 & L506)
40-291210-OAE	P.C.B. CRT BD	1	
41-WJ0050-B00	WIRE BARE JUMPER 5MM	3	L501, L503, L504
41-WJ0060-B00	WIRE BARE JUMPER 6MM	4	J501, R504, R507, R512
46-10967W-01X	PIN BASE *1 TJC1-1A	1	FOR CRT GROUNDING
46-33624H-04X	HS 4P24 280 F/W TJC3-4Y/SCN-4Y	1	P502, FOR M. BD P402
46-33630H-05X	HS 5P24 280 F/W TJC3-5Y/SCN-5Y	1	P503, FOR M. BD P201
47-108112-0UX	SOCKET CRT 12P GZS12-4-2	1	S501
40-1419UA-AVA	P.C.B. AV BD	1	
46-31530H-06X	HS 6P24 F/W 300 TJC3/JC25-6Y	1	P1104B, FOR M. BD P904
47-RCA002-XX0	JACK RCA AV-3.2-1L-F3 WHITE	1	P1102
47-RCA003-XX0	JACK RCA AV-3.2-1L-F1 YELLOW	1	P1101
47-RCA017-XX0	JACK RCA 101P RED/SW	1	P1103
63-B26080-AB4	S/T SCREW B 2.8 X 8 AB	2	MTG F. AV BD TO F.CAB.
02-GND014-XX0	ASS'Y-CRT GND WIRE & HOUS.(14)	1	FOR CRT GROUNDING
36-200580-019	DEGAUSSING COIL JXC-40-1080-14	1	
42-D7616A-XX0	SPEAKER (76MM) 16 OHM 1.5W	2	W601, W602
44-14OFLS-IR2A	CRT 37SX110Y22-DC05 SH/AU	1	CRT01
46-20600H-04X	HS 4P A/B 360/13 RBGW TJC1-4Y	1	P401H, FOR D.Y COIL
46-27250H-02X	HS 2P24 450/5 F/W TJC3-2Y	1	P602H, FOR M. BD P602
46-37144H-02X	HS 2P24 450/5 F/W S11-02H	1	P601H, FOR M. BD P601
54-113971-0UE	PVC TUBE #6 L=160MM	2	FOR SPK HOUS.
54-114000-00X	FELT TAPE 150X19MM	2	
54-205140-000	SPACER CRT MOUNTING T=2MM	4	STICK ON F.CAB
55-1419FC-0AN	FRONT CABINET (94V-0 100%)	1	
55-1419FP-0HA	FRONT PANEL	1	
56-1419FB-0HA	PUSH BUTTON	1	
56-1419PK-0HA	POWER KNOB	1	
56-1419SL-0HA	SPEAKER GRILLE "L"	1	
56-1419SR-0HA	SPEAKER GRILLE "R"	1	
56-357310-0HC	LENS	1	
58-1419FI-0UI	INLAY FRONT AV	1	
59-130460-00X	RUBBER PAD (25MMX7MM)	2	STICK ON F.CAB. (FOOTING)
59-130460-00X	RUBBER PAD (25MMX7MM)	2	STICK ON SPK (R/L) & CRT
62-200980-0HA	MOUNTING POST	2	
62-200990-0HA	CABINET SIDE CATCHER	1	
62-216340-0UA	HOLDER POWER CORD	1	
62-312090-0HA	ADAPTER-POWER KNOB (NEW PCB)	1	
63-B26080-AB4	S/T SCREW B 2.8 X 8 AB	1	MTG PUSH BUTTON & F.CAB
63-B26080-AB4	S/T SCREW B 2.8 X 8 AB	1	MTG SENSOR & F. PANEL
63-B30140-0B4	S/T SCREW B 3 X 14 B	2	MTG PUSH BUTTON & F. CAB.
63-B50250-AB4	S/T SCREW B 5 X 25 AB	4	MTG CRT & F. CAB.
65-307670-0M4	TOOTH WASHER	4	MTG CRT
67-110010-0E0	SPRING CRT 6MMX18MMX0.5MM	1	
67-233100-0E0	SPRING PWR KNOB	1	FOR PWR KNOB
08-14194U-MAN	ASS'Y - MAIN BD		
02-IRR001-XX0	IR RECEIVER MODULE	1	IR001
07-389V15-NX4	TUNER UV1355-BK2(BG/HB/IEC/5V)	1	TU101
10-1N4001-EBX	DIODE 1N4001 (RECTIFIER)	1	D301
10-1N4002-EBX	DIODE 1N4002 (RECTIFIER)	1	D411
10-1N4148-ABX	DIODE 1N4148 (SWITCHING)	10	D206, D206A, D311, D312, D313, D314, D315, D601, D602, D603

PART CODE	DESC	QTY	LOCATION
10-1N4148-ABX	DIODE 1N4148 (SWITCHING)	1	J918, FOR (+)&J221 TO (-)&R901
10-55C4V7-DBX	DIODE ZENER 4.7V 1/2W +/-5%	1	D208
10-55C5V1-DBX	DIODE ZENER 5V1 1/2W +/-5%	1	D004
10-55C8V2-DBX	DIODE ZENER 8V2 1/2W +/-5%	1	D404
10-CW574C-DJX	DIODE CW574CS	1	D001
10-TFR104-FBX	DIODE TFR104 (FAST RECOVERY)	3	D401, D402, D403
11-2N3904-0BX	TRANSISTOR 2N3904 (NPN)	1	Q001
11-DD1555-0AX	TRANSISTOR 3DD1555 (HORIZ)	1	Q402
11-KSD882-0AX	TRANSISTOR KSD882 (POWER)	1	Q608
11-SA1015-YBX	TRANSISTOR 2SA1015Y	4	Q007, Q203, Q205, Q601
11-SC1815-YBX	TRANSISTOR 2SC1815Y	14	Q004, Q005, Q006, Q201, Q202, Q204, Q208, Q603, Q605, Q901, Q902, Q903, Q904, Q905
11-SC2482-0BX	TRANSISTOR 2SC2482	1	Q401
11-SC3779-DBX	TRANSISTOR 2SC3779D (RF AMPL)	1	Q101
11-TA124E-SBX	TRANSISTOR DTA124ES (TP)	1	Q304
11-TC144E-SBX	TRANSISTOR DTC144ES (TP)	3	Q301, Q606, Q607
13-000040-53P	IC 4053 (ANALOG SW)	1	IC901
13-000040-66P	IC 4066 (ANALOG SW.)	1	IC603
13-000L78-05S	IC L7805 CV 5V 1A (REGUALTOR)	1	IC402
13-00M24C-04P	IC M24C04 EEPROM 4K	1	IC002
13-00MC78-09S	IC MC7809C LINEAR +9V 1A	1	IC401
13-0TA840-3KS	IC TA8403K (VERT. OUTPUT)	1	IC301
13-0TDA74-96S	IC TDA7496 (AUDIO)	1	IC601
13-A02V01-TOP	IC TCLM17VR (CPU)	1	IC001
13-TB1238-ANP	IC TB1238AN (P/SIF/VCD) CH/JP	1	IC201
14-LED05R-XX0	LED HFR105 (5MM)	1	D051A
18-CB0101-JNX	RES. C.F. 100 OHM 1/6W +/-5%	4	R048, R049, R238, R251
18-CB0102-JNX	RES. C.F. 1K OHM 1/6W +/-5%	24	J917, R028, R041, R054, R059, R129, R208, R211, R234, R236, R267, R268, R269, R283, R301, R302, R411, R622, R637, R903, R905, R907, R910, R912
18-CB0103-JNX	RES. C.F. 10K OHM 1/6W +/-5%	25	R001, R011, R012, R017, R019, R020, R033, R034, R038, R043, R051, R052, R222, R228, R415, R602, R604, R605, R607, R633, R636, R915, R916, R917, R918
18-CB0104-JNX	RES. C.F. 100K OHM 1/6W +/-5%	3	R035, R037, R042
18-CB0106-JNX	RES. C.F. 10M OHM 1/6W +/-5%	1	R134
18-CB0123-JNX	RES. C.F. 12K OHM 1/6W +/-5%	1	R231
18-CB0151-JNX	RES. C.F. 150 OHM 1/6W +/-5%	2	R107, R109
18-CB0152-JNX	RES. C.F. 1.5K OHM 1/6W +/-5%	1	R025
18-CB0153-JNX	RES. C.F. 15K OHM 1/6W +/-5%	3	R004, R046, R902
18-CB0182-JNX	RES. C.F. 1.8K OHM 1/6W +/-5%	2	R032, R642
18-CB0183-JNX	RES. C.F. 18K OHM 1/6W +/-5%	1	R922A
18-CB0220-JNX	RES. C.F. 22 OHM 1/6W +/-5%	1	R901
18-CB0222-JNX	RES. C.F. 2.2K OHM 1/6W +/-5%	3	R230, R287, R313
18-CB0223-JNX	RES. C.F. 22K OHM 1/6W +/-5%	1	R218
18-CB0224-JNX	RES. C.F. 220K OHM 1/6W +/-5%	1	R232
18-CB0243-JNX	RES. C.F. 24K OHM 1/6W +/-5%	1	R306
18-CB0271-JNX	RES. C.F. 270 OHM 1/6W +/-5%	5	R215, R216, R217, R273, R292
18-CB0272-JNX	RES. C.F. 2.7K OHM 1/6W +/-5%	3	R018, R021, R266
18-CB0303-JNX	RES. C.F. 30K OHM 1/6W +/-5%	1	R210
18-CB0331-JNX	RES. C.F. 330 OHM 1/6W +/-5%	4	R226, R227, R282, R284
18-CB0332-JNX	RES. C.F. 3.3K OHM 1/6W +/-5%	2	R611, R614
18-CB0333-JNX	RES. C.F. 33K OHM 1/6W +/-5%	3	R005, R006, R922
18-CB0391-JNX	RES. C.F. 390 OHM 1/6W +/-5%	2	R219, R220
18-CB0392-JNX	RES. C.F. 3.9K OHM 1/6W +/-5%	2	R013, R015
18-CB0393-JNX	RES. C.F. 39K OHM 1/6W +/-5%	2	R209, R294
18-CB0433-JNX	RES. C.F. 43K OHM 1/6W +/-5%	1	R304
18-CB0470-JNX	RES. C.F. 47 OHM 1/6W +/-5%	4	R009, R010, R026, R061
18-CB0471-JNX	RES. C.F. 470 OHM 1/6W +/-5%	7	R027, R110, R239, R401, R906, R908, R923
18-CB0472-JNX	RES. C.F. 4.7K OHM 1/6W +/-5%	4	R047, R050, R606, R623
18-CB0473-JNX	RES. C.F. 47K OHM 1/6W +/-5%	9	R036, R924, R925, R926, R927, R928, R929, R930, R931
18-CB0560-JNX	RES. C.F. 56 OHM 1/6W +/-5%	1	R112
18-CB0561-JNX	RES. C.F. 560 OHM 1/6W +/-5%	1	R247
18-CB0562-JNX	RES. C.F. 5.6K OHM 1/6W +/-5%	3	R029, R030, R031
18-CB0681-JNX	RES. C.F. 680 OHM 1/6W +/-5%	1	R040
18-CB0683-JNX	RES. C.F. 68K OHM 1/6W +/-5%	1	R307
18-CB0750-JNX	RES. C.F. 75 OHM 1/6W +/-5%	2	R235, R904
18-CB0752-JNX	RES. C.F. 7.5K OHM 1/6W +/-5%	1	R940

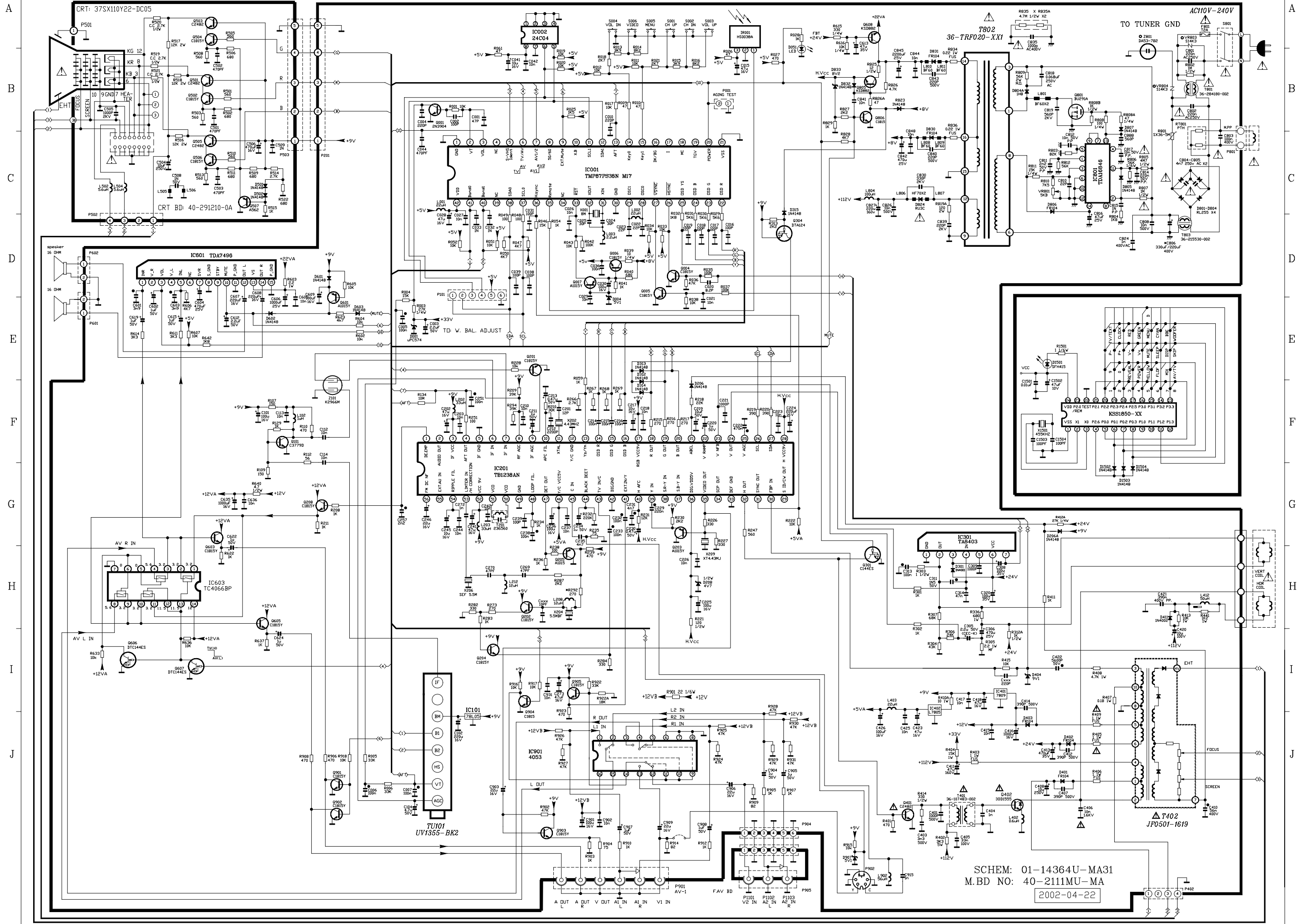
PART CODE	DESC	QTY	LOCATION
18-CB0820-JNX	RES. C.F. 82 OHM 1/6W +/-5%	2	R909, R914
18-CB0822-JNX	RES. C.F. 8.2K OHM 1/6W +/-5%	2	R014, R016
18-CD0100-JNX	RES. C.F. 10 OHM 1/4W +/-5%	1	R039
18-CD0103-JNX	RES. C.F. 10K OHM 1/4W +/-5%	1	R616
18-CD0273-JNX	RES. C.F. 27K OHM 1/4W +/-5%	2	R003, R412A
18-CD0331-JNX	RES. C.F. 330 OHM 1/4W +/-5%	1	R615
18-CE0102-JNX	RES. C.F. 1K OHM 1/2W +/-5%	1	R312A
18-CE0109-JNX	RES. C.F. 1 OHM 1/2W +/-5%	1	R303
18-CE0121-JNX	RES. C.F. 120 OHM 1/2W +/-5%	1	R221
18-CE0331-JNX	RES. C.F. 330 OHM 1/2W +/-5%	1	R414
18-CE0479-JNX	RES. C.F. 4.7 OHM 1/2W +/-5%	1	R640
18-DF0229-JGX	RES. M.F. 2.2 OHM 1W +/-5%	1	R305
18-DF0479-JGX	RES. M.F. 4.7 OHM 1W +/-5%	1	R603
18-EF0109-JGX	RES. FUS. 1 OHM 1W +/-5%	4	R403, R405, R406, R409
18-FF0100-JGX	RES. M.O. 10 OHM 1W +/-5%	1	R410A
18-FF0103-JGX	RES. M.O. 10K OHM 1W +/-5%	1	R413
18-FF0122-JGX	RES. M.O. 1.2K OHM 1W +/-5%	1	R441
18-FF0153-JGX	RES. M.O. 15K OHM 1W +/-5%	1	R404
18-FF0472-JGX	RES. M.O. 4.7K OHM 1W +/-5%	1	R408
18-FF0681-JGX	RES. M.O. 680 OHM 1W +/-5%	1	R336
18-GF0188-JGX	RES WIRE ROUND 0.18 1W +/-5%	1	R407
18-GJ0332-JTX	RES. CEMENT 3.3K OHM 5W +/-5%	1	R402
25-BCA102-M1X	CAP. ELEC 1000 UF 16V +/-20%	2	C416, C635
25-BCB100-M1X	CAP. ELEC 10 UF 16V +/-20%	3	C041, C217, C245
25-BCB101-M1X	CAP. ELEC 100 UF 16V +/-20%	6	C030, C101, C225, C236, C426, C901
25-BCB220-M1X	CAP. ELEC 22 UF 16V +/-20%	4	C246, C903, C906, C909
25-BCB221-M1X	CAP. ELEC 220 UF 16V +/-20%	5	C102, C224, C607, C608, C609
25-BCB470-M1X	CAP. ELEC 47 UF 16V +/-20%	7	C015, C028, C202, C241, C273, C418, C423
25-BDA102-M1X	CAP. ELEC 1000 UF 25V +/-20%	2	C306, C606
25-BDA471-M1X	CAP. ELEC 470 UF 25V +/-20%	1	C604
25-BEA471-M1X	CAP. ELEC 470 UF 35V +/-20%	1	C413
25-BEB101-M1X	CAP. ELEC 100 UF 35V +/-20%	2	C308, C320
25-BEB470-M1X	CAP. ELEC 47 UF 35V +/-20%	1	C613
25-BFB100-M1X	CAP. ELEC 10 UF 50V +/-20%	1	C219
25-BFB109-M1X	CAP. ELEC 1 UF 50V +/-20%	11	C211, C234, C602, C615, C619, C622, C624, C904, C905, C907, C908
25-BFB229-M1X	CAP. ELEC 2.2 UF 50V +/-20%	2	C003, C612
25-BFB478-M1X	CAP. ELEC 0.47 UF 50V +/-20%	2	C213, C230
25-BFB479-M1X	CAP. ELEC 4.7 UF 50V +/-20%	1	C104
25-BHB100-M1X	CAP. ELEC 10 UF 100V +/-20%	1	C420
25-BJA470-M1X	CAP. ELEC 47 UF 160V +/-20%	1	C411
25-BLA100-M1X	CAP. ELEC 10 UF 250V +/-20%	1	C408
25-GFB109-K1X	CAP. ELEC 1UF 50V +/-10%	1	C220
25-GFB229-K1X	CAP. ELEC 2.2UF 50V +/-10%	1	C305
26-ABC121-JZX	CAP. CER 120 PF 50V +/-5% SL	1	C031
26-AIC102-KBX	CAP. CER 1000 PF 500V +/-10% B	1	C401
26-AIC332-KBX	CAP. CER 3300 PF 500V +/-10% B	1	C403
26-AIC391-KBX	CAP. CER 390 PF 500V +/-10% B	3	C407, C412, C414
26-EBP100-JCX	CAP. CER 10 PF 50V +/-5% CH	1	R202
26-EBP101-JCX	CAP. CER 100 PF 50V +/-5% CH	9	C002, C016, C017, C018, C019, C038, C039, C239, C311
26-EBP102-KBX	CAP. CER 1000 PF 50V +/-10% B	6	C032, C033, C221, C272, C309, C404
26-EBP103-ZFX	CAP. CER 0.01UF 50V +80-20% F	22	C026, C027, C029, C042, C112, C113, C114, C203, C210, C218, C223, C226, C237, C242, C244, C415, C417, C425, C605, C636, C902, C931
26-EBP104-ZFX	CAP. CER 0.1UF 50V +80-20% F	4	C036, C214, C215, C216
26-EBP120-JCX	CAP. CER 12 PF 50V +/-5% CH	1	C201
26-EBP220-JZX	CAP. CER 22 PF 50V 5% SL TUBU	2	C022, C023
26-EBP221-JCX	CAP. CER 220 PF 50V +/-5% CH	3	C004, C010, C427
26-EBP222-KBX	CAP. CER 2200PF 50V +/-10% B	1	C212
26-EBP300-JZX	CAP. CER 30 PF 50V +/-5% SL	2	C024, C025
26-EBP470-JCX	CAP. CER 47 PF 50V +/-5% CH	2	C269, C270
26-EBP470-JZX	CAP. CER 47 PF 50V +/-5% SL	1	C001
26-EBP471-JCX	CAP. CER 470 PF 50V +/-5% CH	1	C044
26-EBP472-KBX	CAP. CER 4700 PF 50V +/-10% B	1	C235
26-EBP829-JCX	CAP. CER 8.2PF 50V +/-5% CH	1	C020
27-AHR394-J0X	CAP. M.PP 0.39 UF 400V +/-5%	1	C421
27-ALR922-J0X	CAP. M.PP 9200 PF 1.6KV +/-5%	1	C406
27-MBC104-J0X	CAP. M.P.E.0.1 UF 50V +/-5%	8	C005, C006, C007, C232, C233, C238, C251, C313

PART CODE	DESC	QTY	LOCATION
27-MBC224-J0X	CAP. M.P.E. 0.22 UF 50V +/-5%	1	C229
27-MBC474-J0X	CAP. M.P.E. 0.47 UF 50V +/-5%	1	C222
27-PBC222-J0X	CAP. P.E. 2200 PF 50V +/-5%	1	C257
27-PBC392-J0X	CAP. P.E. 3900 PF 50V +/-5%	2	C601, C603
27-PBC472-J0X	CAP. P.E. 4700PF 50V +/-5%	1	C231
27-PBC563-J0X	CAP. P.E 0.056 UF 50V +/-5%	1	C314
27-PBC682-J0X	CAP. P.E. 6800 PF 50V +/-5%	1	C422
27-RCK333-J0X	CAP. PP 0.033UF 100V +/-5%	1	C405
27-RHQ563-J0X	CAP. PP 0.056 UF 400V +/-5%	1	C410
34-A109K0-0IX	COIL CHOKE 1 UH +/-10%	1	L102
34-A608K6-1BX	COIL CHOKE 0.6 UH +/-10%	1	L402
34-R120J2-0EX	COIL PL - 12 UH +/-5%	2	L208, L212
34-R220J2-0EX	COIL PL - 22 UH +/-5%	3	L001, L002, L403
34-R229J2-0EX	COIL PL - 2.2 UH +/-5%	1	L003
34-R330J2-0EX	COIL PL - 33 UH +/-5%	3	L103A, L202, L203
36-HDR001-XX1	TRANSFORMER HORIZ DRIVE	1	T401
36-LIN500-XX1	COIL LINEARITY 50 UH	1	L412
37-BSC250-231	FLYBACK BSC250-231	1	T402
38-236560-00X	COIL I.F.T. 236560 FOR VCO	1	T201
40-2111MU-MAK	P.C.B. MAIN BD	1	
41-WJ0025-B00	WIRE BARE JUMPER 2.5MM	1	FOR Q213 (C-E)
41-WJ0025-B00	WIRE BARE JUMPER 2.5MM	1	FOR Q609 (B-C)
41-WJ0050-B00	WIRE BARE JUMPER 5MM	1	FOR Q602 (B-E)
41-WJ0050-B00	WIRE BARE JUMPER 5MM	1	FOR Q604 (B-E)
41-WJ0050-B00	WIRE BARE JUMPER 5MM	21	C610, C614, C621, C623, C915, J044, J045, J408, J409, J410, J411, J412, J413, J414, J415, J416, L201, L204, L205, L206, L207
41-WJ0060-B00	WIRE BARE JUMPER 6MM	26	J005, J009, J012, J102, J110, J111, J112, J115, J116, J212, J239, J243, J251, J604, J623, J628, J629, J903, J906, J908, R002, R044, R609, R612, R617, R619
41-WJ0065-B00	WIRE BARE JUMPER 6.5MM	6	J048, J210, J211, J608, J612, R133
41-WJ0070-B00	WIRE BARE JUMPER 7MM	3	J101, J109, J233
41-WJ0075-B00	WIRE BARE JUMPER 7.5MM	27	J003, J004, J007, J010, J013, J014, J017, J018, J019, J020, J201, J205, J216, J226, J234, J240, J253, J304, J417, J418, J419, J607, J609, J610, J907, L411, R920
41-WJ0080-B00	WIRE BARE JUMPER 8 MM	1	FOR P1 - P5 OF IC202
41-WJ0080-B00	WIRE BARE JUMPER 8 MM	5	J106, J244, J245, J602, J603
41-WJ0085-B00	WIRE BARE JUMPER 8.5MM	5	J002, J204, J207, J232, J237
41-WJ0090-B00	WIRE BARE JUMPER 9MM	3	J042, J404, J905
41-WJ0095-B00	WIRE BARE JUMPER 9.5MM	1	J235
41-WJ0100-B00	WIRE BARE JUMPER 10MM	20	J006, J008, J021, J028, J029, J034, J035, J121, J122, J123, J209, J231, J238, J241, J605, J606, J624, J904, J916, L904
41-WJ0110-B00	WIRE BARE JUMPER 11MM	1	J027
41-WJ0115-B00	WIRE BARE JUMPER 11.5MM	2	J104, J246
41-WJ0125-B00	WIRE BARE JUMPER 12.5MM	19	D406, J011, J117, J120, J202, J203, J208, J236, J302, J401, J402, J601, J616, J617, J618, J619, J915, R310, R601
41-WJ0130-B00	WIRE BARE JUMPER 13MM	2	J621, J622
41-WJ0135-B00	WIRE BARE JUMPER 13.5MM	3	J225, J229, J914
41-WJ0140-B00	WIRE BARE JUMPER 14MM	5	J227, J228, J230, J625, J626
41-WJ0150-B00	WIRE BARE JUMPER 15MM	20	D006, D007, D008, D009, J015, J022, J023, J024, J025, J026, J030, J031, J032, J033, J107, J242, J247, J303, J614, R410
41-WJ0155-B00	WIRE BARE JUMPER 15.5MM	1	J016
41-WJ0165-B00	WIRE BARE JUMPER 16.5MM	2	J217, J254
41-WJ0170-B00	WIRE BARE JUMPER 17MM	2	J036, J037
41-WJ0175-B00	WIRE BARE JUMPER 17.5MM	1	J046
41-WJ0180-B00	WIRE BARE JUMPER 18MM	4	J218, J219, J223, J224
41-WJ0190-B00	WIRE BARE JUMPER 19MM	2	J222, J403
41-WJ0200-B00	WIRE BARE JUMPER 20MM	1	J250
45-FIL5M5-0Y0	CER. FILTER 5.5 MHZ	1	X206
45-OSC4M4-3Y0	CRYSTAL 4.43 MHZ	1	X202
45-OSC8M0-0Y0	CRYSTAL 8.0MHZ	1	X001
45-SAW296-6M0	SAW FILTER K2966M 38.9MHZ	1	Z101
45-TRA4M4-3Y0	CER. TRAP 4.43 MHZ	1	X209
45-TRA5M5-0Y0	CER. TRAP 5.5 MHZ	1	X204
46-12866W-02X	PIN BASE *2 S11-02W	1	P601, FOR FRONT CAB. (SPK)
46-20598W-04X	PIN BASE *4 TJC1-4A	1	P401, FOR DY CONNECTOR

PART CODE	DESC	QTY	LOCATION
46-33079W-02X	PIN BASE *2 TJC3-2A	1	P602, FOR FRONT CAB. (SPK)
46-33079W-02X	PIN BASE *2 TJC3-2A	1	P001, FOR AGING TEST
46-33079W-04X	PIN BASE *4 TJC3-4A	1	P402, FOR CRT BD P502
46-33079W-05X	PIN BASE *5 TJC3-5A	1	P201, FOR CRT BD P503
46-33079W-06X	PIN BASE *6 TJC3-6A	1	P904, FOR FRONT AV BD P1104B
46-33079W-06X	PIN BASE *6 TJC3-6A	1	P101, FOR W.BAL. ADJUST
47-RCA021-XX0	RCA JACK 6P RED/SW. WHT. YEL	1	P901
47-SVI002-XX0	SOCKET S-W16-J	1	P902
48-TAC002-XX0	SW. TACT VERT (H=4MM L=6.4MM)	6	S001, S002, S003, S004, S005, S006
62-10654X-00F	UNI - TIE (2.5MMX95MM)	2	
62-227680-0UA	HOLDER CABLE FOR FBT (2)	1	
62-291630-0HH	MTG SPACER FBT & H.SINK 1701AS	1	FOR FBT & H.SINK
62-357320-0HA	LIGHT BRACKET	1	
63-B40150-AB2	S/T SCREW B 4 X 15 AB	1	MTG FBT & H.SINK
64-B30080-104	M/C SCREW B 3 X 8	1	FOR IC601
64-P30060-104	M/C SCREW 3 X 6 (ZINC)	2	FOR IC401 & IC402
64-P30100-104	M/C SCREW P 3 X 10	2	FOR IC301 & Q402
65-Z30050-23M	NUT M 3	2	FOR IC301 & Q402
66-343730-0B0	HOLLOW RIVET 1.6X3.0XL3.2	2	FOR L412
66-343730-0B0	HOLLOW RIVET 1.6X3.0XL3.2	2	FOR R402
66-343730-0B0	HOLLOW RIVET 1.6X3.0XL3.2	4	FOR T402
67-H10918-4M2	HEAT SINK	1	FOR IC402
67-H24249-2M2	HEAT SINK	1	FOR IC401
67-H30752-1A0	HEAT SINK	2	FOR IC301 & Q402
67-H34423-8A0	HEAT SINK A=60MM	1	FOR IC601
70-271510-00A	SERVICE CARD	1	FOR PRODUCTION USE
71-270870-0A9	LABEL	3	
90-209770-SR1	SILICONE GREASE G-746 (1KG/CAN	0	FOR Q402 & IC601
90-269080-ZU0	CLEAN COATING TC-131L 14KG/BAR	0	
49-341790-BAT	BATTERY AA SIZE	2	
72-14194U-E12	OPERATION MANUAL	1	
74-022032-6WE	POLYBAG (22CMX32CMX0.06MM)	1	FOR OPERATION MANUAL
74-081081-80HAA	POLYBAG W/SUFFOCATION WARNING	1	
75-253270-C01	POLYFOAM (UR)	1	
75-253280-C01	POLYFOAM (UL)	1	
75-253290-C01	POLYFOAM (LR)	1	
75-253300-C01	POLYFOAM (LL)	1	
75-314900-C00	POLYFOAM PLATE 2911DZ	1	
76-01419A-0AT	CARTON BOX	1	
08-01419U-PW3	ASS'Y - POWER PARTS (AUST)		
10-0001H8-FBX	DIODE 1H8 (FAST RECOVERY)	1	D804A
10-ORL255-EBX	DIDEO RL255 (RECTIFIER)	4	D801, D802, D803, D804
10-0TRU3C-F0X	DIODE TRU3C (FAST RECOVERY)	1	D824
10-1N4148-ABX	DIODE 1N4148 (SWITCHING)	4	D805, D807, D832, R823
10-55C8V2-DBX	DIODE ZENER 8V2 1/2W +/-5%	1	D833
10-TFR104-FBX	DIODE TFR104 (FAST RECOVERY)	3	D806, D830, D831
11-BUZ91A-0AX	TRANSISTOR BUZ91A	1	Q801
11-KSD882-0AX	TRANSISTOR KSD882 (POWER)	1	Q805
11-SC1815-YBX	TRANSISTOR 2SC1815Y	1	Q806
13-TDA168-46P	IC TDA16846 (SMPS)	1	IC801
18-CB0102-JNX	RES. C.F. 1K OHM 1/6W +/-5%	1	R829
18-CB0182-JNX	RES. C.F. 1.8K OHM 1/6W +/-5%	1	R804
18-CB0222-JNX	RES. C.F. 2.2K OHM 1/6W +/-5%	1	R827
18-CB0470-JNX	RES. C.F. 47 OHM 1/6W +/-5%	1	R826A
18-CB0472-JNX	RES. C.F. 4.7K OHM 1/6W +/-5%	2	R826, R828
18-CB0563-JNX	RES. C.F. 56K OHM 1/6W +/-5%	2	R806, R812
18-CB0752-JNX	RES. C.F. 7.5K OHM 1/6W +/-5%	1	R810
18-CB0823-JNX	RES. C.F. 82K OHM 1/6W +/-5%	1	R803
18-CD0101-JNX	RES. C.F. 100 OHM 1/4W +/-5%	1	R808
18-CD0153-JNX	RES. C.F. 15K OHM 1/4W +/-5%	1	R811
18-CD0470-JNX	RES. C.F. 47 OHM 1/4W +/-5%	1	R808A
18-CE0102-JNX	RES. C.F. 1K OHM 1/2W +/-5%	1	R808B
18-EF0228-JGX	RES. FUS. 0.22 OHM 1W +/-5%	2	R834, R836
18-FE0120-JNX	RES. M.O. 12 OHM 1/2W +/-5%	1	R825
18-FG0121-JHX	RES. M.O. 120 OHM 2W +/-5%	1	R819A
18-FG0563-JHX	RES. M.O. 56K OHM 2W +/-5%	1	R809
18-GJ0339-KUX	RES. CEMENT 3.3 OHM 5W +/-10%	1	R801
18-KE0105-JNX	RES. H. VOLT. CC 1M OHM 1/2W	2	R802, R807
18-KE0475-JNX	RES. H. VOLT. CC 4.7M OHM 1/2W	3	R805, R835, R835A

PART CODE	DESC	QTY	LOCATION
20-TR502H-5CX	TRIMMER B5K HORIZ TYPE	1	VR801
22-PTC360-XX0	PTC 36 OHM	1	RT801
25-343260-M1X	CAP. ELEC 2200UF 25V 20% 12X25	1	C845
25-BDA471-M1X	CAP. ELEC 470 UF 25V +/-20%	1	C842
25-BDB470-M1X	CAP. ELEC 47 UF 25V +/-20%	1	C816
25-BJG221-M1X	CAP. ELEC 220 UF 160V +/-20%	1	C827
25-BMJ221-M1X	CAP. ELEC 220 UF 400V +/-20%	1	C806
26-AIC221-KBX	CAP. CER 220 PF 500V +/-10% B	2	C840, C843
26-AIM103-KBX	CAP. CER 0.01 UF 500V +/-10% B	2	C808, C826
26-AMK221-JZX	CAP. CER 220 PF 2KV +/-5% SL	1	C839
26-AMK331-JZX	CAP. CER 330 PF 2KV +/-5% SL	1	C830
26-AMK561-JZX	CAP. CER 560 PF 2KV +/-5% SL	1	C819
26-APK102-MEJ	CAP. CER 1000PF 400VAC+/-20% E	1	C824
26-APK222-MEJ	CAP. CER 2200PF 250VAC+/-20% E	1	C835
26-AQK472-ZFX	CAP. CER 4700PF 250VAC+80-20%F	2	C804, C805
26-EBP103-ZFX	CAP. CER 0.01UF 50V +80-20% F	3	C841, C844, C848
26-EBP220-JZX	CAP. CER 22 PF 50V 5% SL TUBU	1	C810
26-EBP561-JCX	CAP. CER 560 PF 50V +/-5% CH	1	C888
27-AQT224-MVF	CAP. M.PP 0.22UF 250VAC 20% CB	2	C801, C802
27-MBC224-J0X	CAP. M.P.E. 0.22 UF 50V +/-5%	1	C814
27-MHM104-K0X	CAP. METAL P.E. 0.1UF 400V 10%	1	C803
27-MQW683-M0X	CAP.M.PE 0.068UF 250VAC +/-20%	1	C818
27-PBC102-J0X	CAP. P.E. 1000 PF 50V +/-5%	1	C815
27-PBC103-J0X	CAP. P.E. 0.01UF 50V +/-5%	2	C812, C817
27-PBC222-J0X	CAP. P.E. 2200 PF 50V +/-5%	1	C811
34-R101K2-1CX	COIL CHOKE 100 UH +/-10% W/TUB	1	L804
35-139730-00X	FERR. BEAD BF60	2	FOR L801
35-139730-00X	FERR. BEAD BF60	2	FOR D831 (L810 & L811)
35-139730-00X	FERR. BEAD BF60	2	FOR D830 (L808 & L809)
35-237250-00X	FERR. BEAD HF70	2	FOR D824 (L806 & L807)
36-LIF002-XX0	LINE FILTER 20 MH	1	T803
36-LIF010-XX0	LINE FILTER LCL-2821A	1	T801
36-TRF020-XX3	TRANSFORMER CONV. BCK-4001-34F	1	T802
41-AJ0125-BEE	WIRE BARE JUMPER 12.5MM	1	L801, FOR FERR. BEAD BF60 X2
41-WJ0050-B00	WIRE BARE JUMPER 5MM	10	C837, C850, J810, J811, J812, J813, J814, J815, J816, J817
41-WJ0060-B00	WIRE BARE JUMPER 6MM	1	J801A
41-WJ0075-B00	WIRE BARE JUMPER 7.5MM	2	J802, J805
41-WJ0140-B00	WIRE BARE JUMPER 14MM	1	J806
41-WJ0150-B00	WIRE BARE JUMPER 15MM	2	J801, J803
46-10962W-02X	PIN BASE *2 TJC2-2A	1	P801, FOR DEGAUSSING COIL
46-28559W-02X	PIN BASE *2 TJC1-2A	1	P802, FOR POWER CORD
48-256460-0C0	SW. POWER TV8 (PCB MOUNTING)	1	S801
50-26930D-1VS	FUSE 2.0AT 250VAC 5X20MM BELL	1	F801
51-JC0243-0CH	POWER CORD SAA PLUG W/HOUSING	1	
54-343210-000	MICA SHEET (21MMX16MMX0.1MM)	1	FOR Q801
66-20516X-0B0	FUSE HOLDER	2	FOR F801
66-343730-0B0	HOLLOW RIVET 1.6X3.0XL3.2	2	FOR C827
66-343730-0B0	HOLLOW RIVET 1.6X3.0XL3.2	4	FOR T802
67-339070-1E7	SPRING CLIP	1	MTG Q801
67-H28649-3A0	HEAT SINK	1	FOR Q801
90-209770-SR1	SILICONE GREASE G-746 (1KG/CAN)	0	FOR Q801
54-114000-00X	FELT TAPE 150X19MM	6	STICK ON REAR CAB.
55-1419RC-0AN	REAR CABINET (94V-0 100%)	1	
58-1419MP-JKT	PLATE MODEL NO.	1	
58-1419RI-1UI	INLAY TERMINAL BD(RCA-6 + Y/C)	1	
59-237940-000	RUBBER POST	2	STICK ON R. CAB.
62-301490-0UN	SUPPORTER (FOR FBT)	1	FOR FBT
63-B40200-AB2	S/T SCREW B 4 X 20 AB	4	MTG R.CAB. & F.CAB.
63-F30100-BT3	S/T SCREW F 3 X 10 BT (BLACK)	2	MTG RCA JACK & REAR CAB.
63-W30100-AB2	S/T SCREW W 3 X 10 AB	2	MTG SUPPORTER
08-HS46F0-M17	ASS'Y - REMOTE HANDSET		
11-0BC337-0BX	TRANSISTOR BC337-40 (NPN)	1	Q1501
13-9028F0-22P	IC TC9028F-022 (IR TRANS.)	1	IC1501
14-IRE05B-XX0	INFARED EMITTING DIODE	1	D1501
18-CB0109-JNX	RES. C.F. 1 OHM 1/6W +/-5%	1	R1501
18-CB0682-JNX	RES. C.F. 6.8K OHM 1/6W +/-5%	1	R1502
25-HBB470-M1X	CAP. ELEC 47UF 10V +/-20%	1	C1502
26-EBP101-JCX	CAP. CER 100 PF 50V +/-5% CH	2	C1503, C1504

PART CODE	DESC	QTY	LOCATION
40-2111MU-RMA	P.C.B. IR HANDSET BD	1	
45-COS455-KY0	CER RESONATOR 455 KHZ	1	X1501
49-HS46F0-00X	RUBBER PAD KEYS	1	
55-HS46FB-0HA	CASE LOWER - REMOTE HANDSET	1	
55-HS46FD-0HA	DOOR BATT. - REMOTE HANDSET	1	
55-HS46FT-0HA	CASE UPPER - REMOTE HANDSET	1	
58-HS46F0-YUI	INLAY IR TRANSMITTER BD	1	
63-B26060-BT2	S/T SCREW B 2.6 X 6 BT	1	
67-26968X-0E2	BATT. TERMINAL (+/-)	1	
67-310280-0E2	SPRING - BATTERY (-)	1	
67-310290-0E2	SPRING - BATTERY (+)	1	
74-009022-60C	POLYBAG HANDSET (9CMX22CM)	1	



SCHEM: 01-14364U-MA31
 M.BD NO: 40-2111MU-MA
 2002-04-22